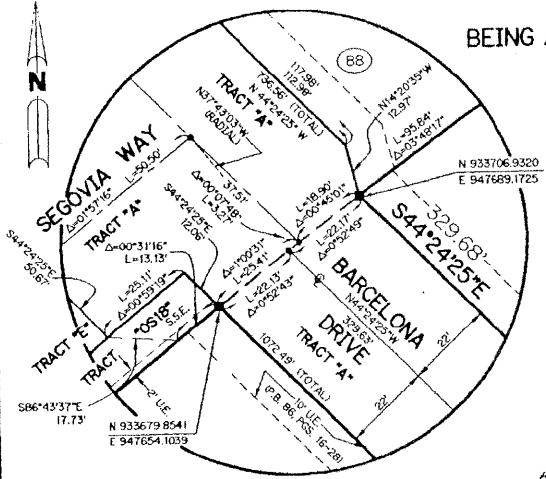


VALENCIA AT ABACOA - PHASE I

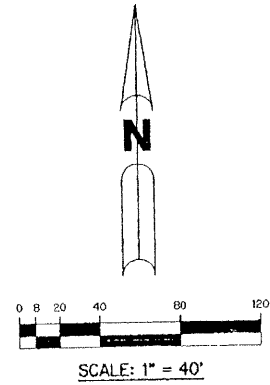
BEING A REPLAT OF TRACT R100 AND A PORTION OF TRACT RN6A2, ABACOA PLAT NO. 2 AS RECORDED IN PLAT BOOK 86, PAGES 16 THROUGH 28 OF THE PUBLIC RECORDS OF PALM BEACH COUNTY, FLORIDA. LYING IN SECTION 13, TOWNSHIP 41 SOUTH, RANGE 42 EAST TOWN OF JUPITER, PALM BEACH COUNTY, FLORIDA

SHEET 4 OF 7 MARCH, 2001

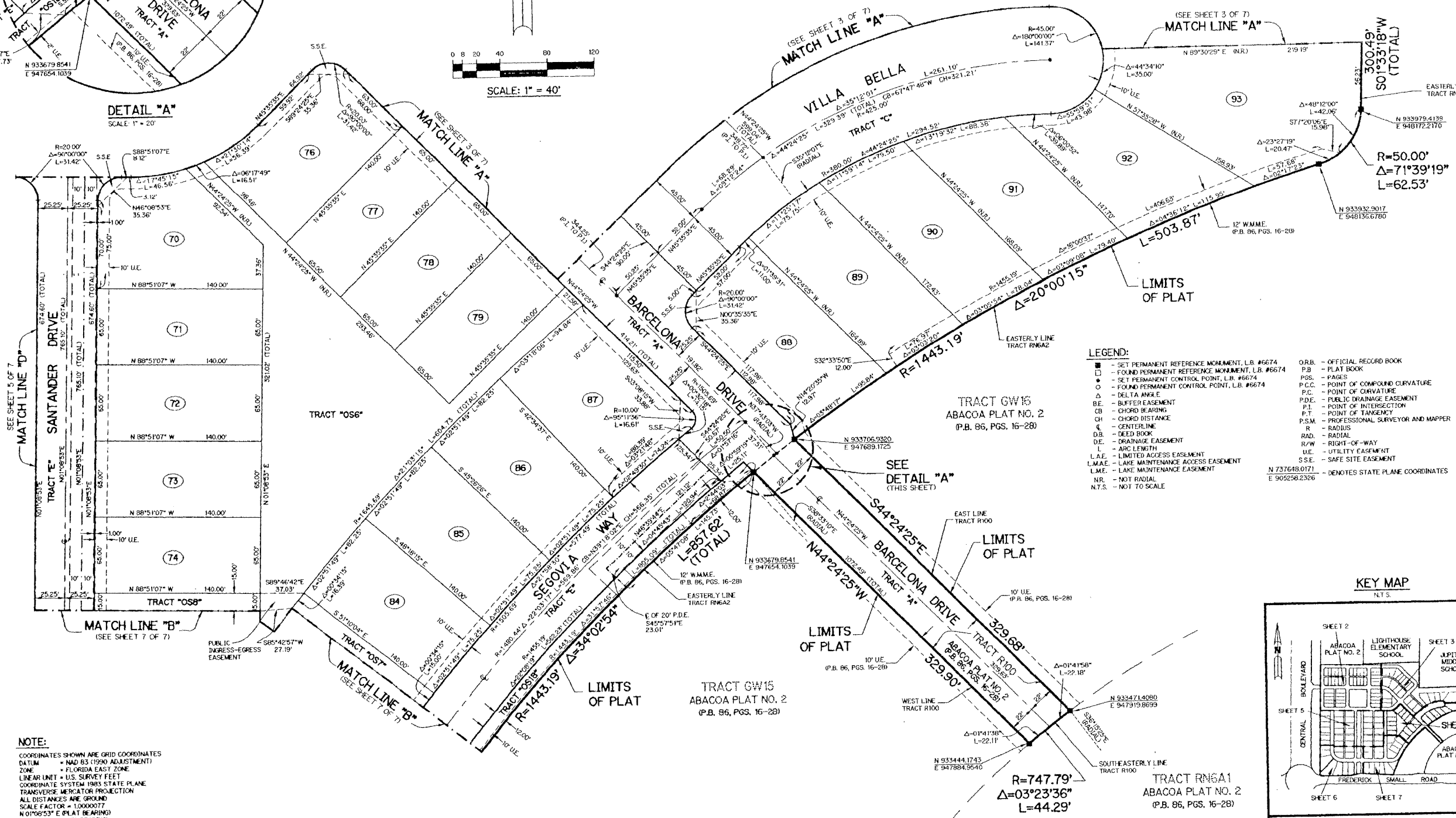
THIS INSTRUMENT PREPARED BY
 WILBUR F. DIVINE, P.S.M. 4190, STATE OF FLORIDA
 LAWSON, NOBLE AND WEBB, INC.
 ENGINEERS PLANNERS SURVEYORS
 420 COLUMBIA DRIVE
 WEST PALM BEACH, FLORIDA 33409
 LB-6674



DETAIL "A"
 SCALE: 1" = 20'

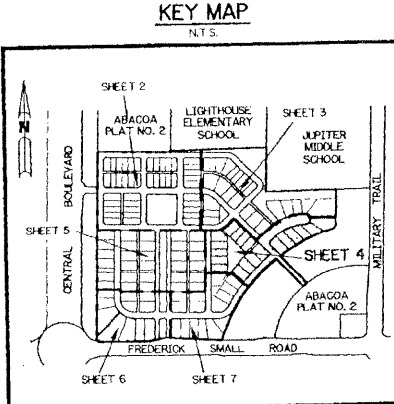


SCALE: 1" = 40'



- LEGEND:**
- - SET PERMANENT REFERENCE MONUMENT, L.B. #6674
 - - FOUND PERMANENT REFERENCE MONUMENT, L.B. #6674
 - - SET PERMANENT CONTROL POINT, L.B. #6674
 - - FOUND PERMANENT CONTROL POINT, L.B. #6674
 - Δ - DELTA ANGLE
 - BE - BUFFER EASEMENT
 - CB - CHORD BEARING
 - CH - CHORD DISTANCE
 - CL - CENTERLINE
 - DB - DEED BOOK
 - DE - DRAINAGE EASEMENT
 - L - ARC LENGTH
 - L.A.E. - LIMITED ACCESS EASEMENT
 - L.M.A.E. - LAKE MAINTENANCE ACCESS EASEMENT
 - L.M.E. - LAKE MAINTENANCE EASEMENT
 - NR - NOT RADIAL
 - N.T.S. - NOT TO SCALE
 - O.R.B. - OFFICIAL RECORD BOOK
 - P.B. - PLAT BOOK
 - P.S. - PAGES
 - P.C. - POINT OF COMPOUND CURVATURE
 - P.C. - POINT OF CURVATURE
 - P.D.E. - PUBLIC DRAINAGE EASEMENT
 - P.I. - POINT OF INTERSECTION
 - P.T. - POINT OF TANGENCY
 - P.S.M. - PROFESSIONAL SURVEYOR AND MAPPER
 - R - RADIUS
 - RAD. - RADIAL
 - R/W - RIGHT-OF-WAY
 - UE - UTILITY EASEMENT
 - S.S.E. - SAFE SITE EASEMENT
 - N 737618.0171 E 905258.2326 - DENOTES STATE PLANE COORDINATES

NOTE:
 COORDINATES SHOWN ARE GRID COORDINATES
 DATUM = NAD 83 (1990 ADJUSTMENT)
 ZONE = FLORIDA EAST ZONE
 LINEAR UNIT = U.S. SURVEY FEET
 COORDINATE SYSTEM 1983 STATE PLANE
 TRANSVERSE MERCATOR PROJECTION
 ALL DISTANCES ARE GROUND
 SCALE FACTOR = 1.000077
 N 01°08'53" E (PLAT BEARING)
 N 01°08'53" E (GRID BEARING)
 NO ROTATION



A493 SHEET 4 OF 7